



Geosynthetic Environmental Solutions

GTEK COVERPRO[®] SYSTEM

Specialized
Installation and
Geomembranes

PROTECTING THE EARTH AND
ENVIRONMENT



www.gtekresources.com

A subsidiary of
VGM
Group



Universally Deployable GTEK COVERPRO[®] System

GTEK COVERPRO[®] System offer the right solution for every application through an array of products made of many different combinations of surfaces and materials while being supported by an extensive installation methodology and best practice quality assurance. GTEK COVERPRO[®] System are found wherever geomembranes are used, such as in landfill, mining, and methane containment for biogas, groundwater protection, and water containment.

Containment, Soil and Groundwater Protection

With geomembranes for mining, hydraulic, and landfill engineering as well as liquid manure and retention basins.

GTEK COVERPRO[®] System offer solutions for different requirement:

- Available in HDPE and LLDPE
- Available in different surface structures (e.g., smooth, single-side texture, and double-side textured)
- Available in different colours: White liner, Green liner, Tan liner

Excellent Product Properties

Thanks to the use of the chemically resistant materials PE.

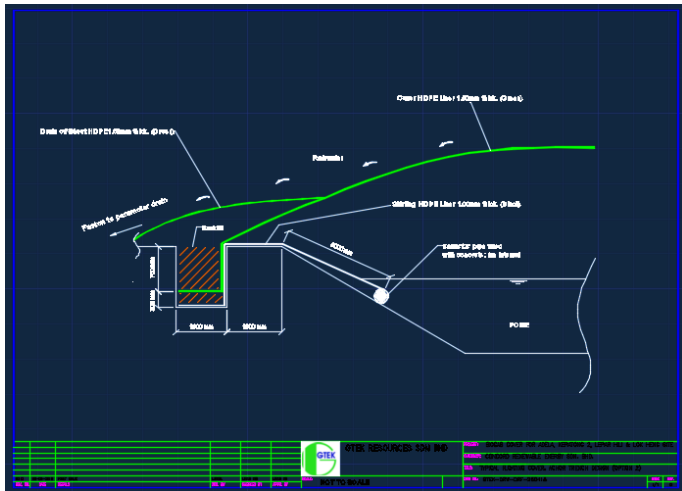
GTEK COVERPRO[®] System will last decades:

- Plasticiser-free plastics guarantee long-term performance
- High tensile strength, elasticity, and flexibility
- Excellent UV and static puncture resistance.

Applications

GTEK COVERPRO[®] System can be utilized in many applications across many industries and projects including:

- Sanitary landfills leachate collection, cap and closures
- Pond liners for golf courses, amusement parks, resorts, agriculture and aquaculture
- Mining heap leach pad, tailing ponds
- Tank pad and secondary containment for oil & gas tank farm
- Canal lining
- Biogas floating cover and effluent ponds



Technical Consultation and Design Assistance

Available technical expertise for consultation and design proposal.

Our technical team to provide answers and solutions of geotechnical problems and design:

- Technical discussion, technical presentation, site-visit
- Furnished with recommended material specification, method statement, installation methodology
- Design assistance/proposal on anchor trench, underground sub-soil pipe system, floating cover



Superior and Economic Installation

Simple and permanent welding technologies.

Suitable for any application:

- Physiological safe welding
- Innovative installation methods
- Conforms to guidelines of International Association of Geosynthetic Installers (IAGI)
- Guaranteed against defects in the installation and workmanship



Quality Control and Quality Assurance

Geomembrane weld testing methods.

A complete system for the perfect quality assurance manual:

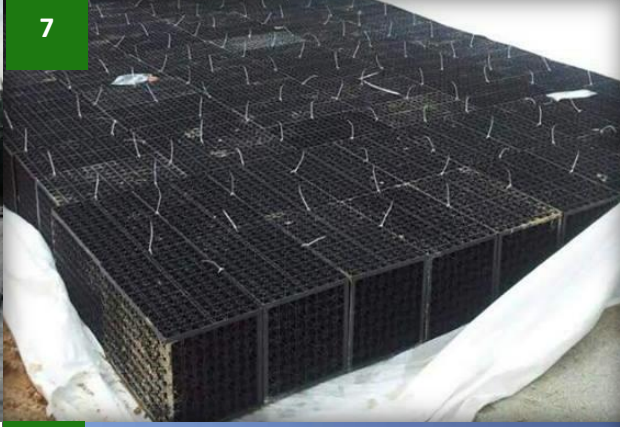
- Vacuum testing, air pressure testing, shear and peel testing
- Complete on-field quality control with QA/QC report
- Test methods in accordance with current quality control and quality assurance standards of the geomembrane industry



PROJECT REFERENCES

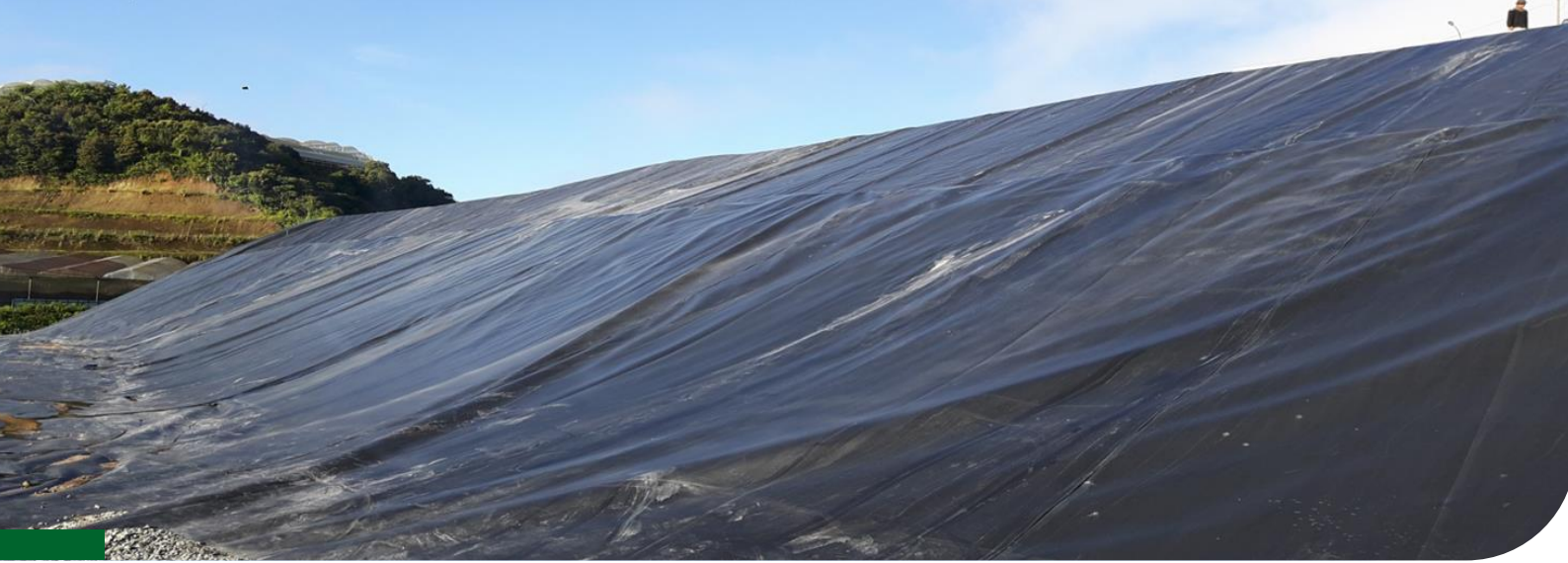
GTEK COVERPRO[®] SYSTEM





1. Palm Oil Mill Effluent Ponds
2. Oil Storage Tank Farm
3. Residential Park Pond Lining
4. Sanitary Landfill
5. New Landfill Cell
6. Detention Pond
7. Rainwater Module Tank
8. Palm Oil Mill Effluent Pond
9. New Terminal Tank Farm Phase
10. Biogas Lagoon Cover
11. Aqua Farm
12. Biogas Floating Cover
13. Aqua Hatchery Pond
14. Sanitary Landfill Cell 5 & 6
15. Detention Pond
16. Palm Oil Effluent Pond
17. Sanitary Landfill
18. Shrimp Pond
19. Shrimp Pond
20. Biogas Floating Cover
21. Biogas Floating Cover
22. Untreated Marine Water Reservoir
23. Municipal Waste Landfill Cell





HDPE Concrete Lock



Geosynthetic
Environmental
Solutions



Geomembrane
(HDPE/LLDPE)



Woven & Non-woven
Geotextile



Gabions



Stormwater Module
Tank



Geosynthetic Clay
Liners (GCLs)



Extrusion/Welding Rod



GTEK Resources Sdn Bhd
27, Jalan Indah 2/10
Taman Universiti Indah
43300 Seri Kembangan
Selangor DE.
Malaysia

T. +603 8942 1145
F. +603 8942 1150
salesadmin@vgm-grp.com

LinkedIn <https://www.facebook.com/marketinggtekresources/>
facebook <https://www.linkedin.com/company/gtek-resources-sdn-bhd/>

